



Image by Charles Feacham

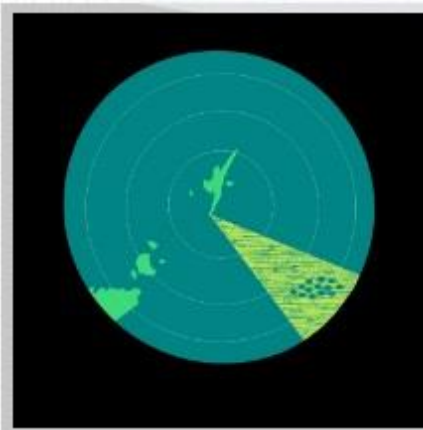


During WWII there was a Radar Station at Sumburgh Head. It began permanent watch from 27 December 1939 and it recorded enemy submarines moving from the North Sea into the North Atlantic. It could also detect planes by transmitting and receiving radio waves.

Read the top secret cartoon below to find out how AES1 gave early warning of a large scale attack on Orkney...



ON 08.04.1940 SIXTY PLANES LEFT GERMANY TO LAUNCH A SURPRISE ATTACK ON THE ROYAL NAVY, AT ANCHOR IN SCAPA FLOW, ORKNEY...



BACK AT AES1, SUB-LIEUTENANT GEORGE CLIFFORD EVANS WAS IN CHARGE. HE DETECTED THE PLANES 100 MILES SOUTH-EAST OF SUMBURGH HEAD...



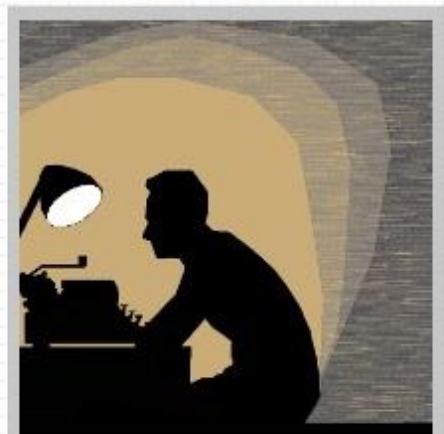
SUB-LIEUTENANT EVANS WAS ABLE TO PROVIDE A 25 MINUTE WARNING OF THIS ATTACK TO THE COMMANDING OFFICER AT SCAPA FLOW...



AS THE PLANES CONTINUED TO BE TRACKED, EVANS STEPPED OUTSIDE ON A CLEAR STARLIT NIGHT AND WATCHED A TREMENDOUS FIREWORK DISPLAY IN TOTAL SILENCE...



THIS WAS THE SCAPA BARAGE REPELLING ENEMY ATTACK. EIGHT MINUTES LATER THE RUMBLE AND ROAR OF THE ANTI-AIRCRAFT GUNS COULD BE HEARD IN LERWICK, 125 MILES AWAY...



AFTER THE EVENT, EVANS WROTE ABOUT WHAT THE RADAR STATION HAD ACHIEVED THAT NIGHT. IT COULD HAVE BEEN A VERY DIFFERENT OUTCOME IF THEY HAD NOT DETECTED THOSE PLANES.